

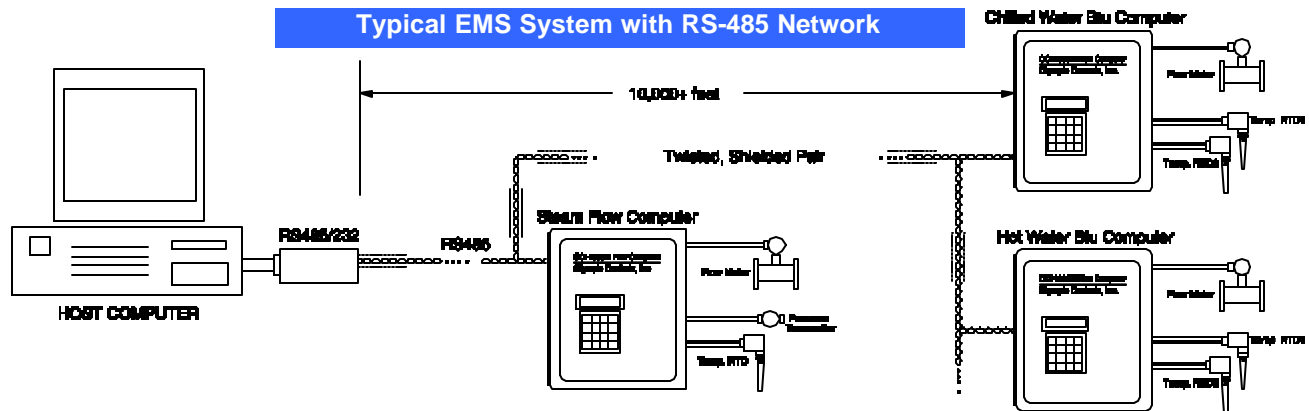
## OCi-1000M Series Energy Computers in the Energy Management System (EMS)

Used primarily for utility accounting purposes, these units are installed with companion flow meters and pressure/temperature sensors to precisely meter chilled or hot water Btu's, steam mass, natural gas or other utilities.

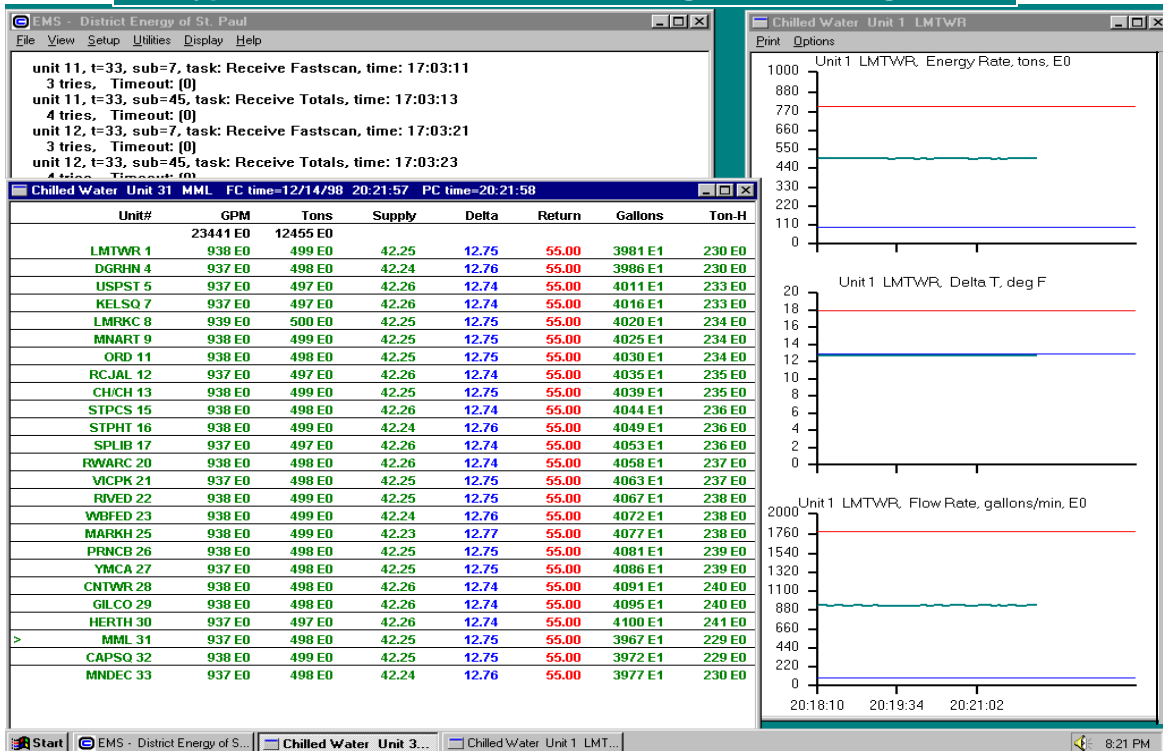
A host EMS program offered by OCI collects real time and archival data from more than 500 remote computers. Multi-drop communication network may be a simple RS-485 with direct twisted, shielded wire pair, fiber-optic cable, telephone or radio modem.

Each OCi-1000M may be a stand-alone unit, configured from its keypad and alpha-numeric display, or it may be remotely configured from the EMS program.

Information collected by the host PC may be directly imported into popular data bases/spreadsheets for billing purposes by District Energy providers.



## Typical Windows NT Screen Running the EMS Program



Made in USA by:

**Olympic Controls, Inc. – 12818 Century Dr., Stafford, TX 77477 -- Ph:281-240-1540/Fax:281-240-1538**